



CONVERTIBLE COLLECTION

User Guide

Interchangeable Styling Wands, Barrels, and Power Base
Model No. 76577, 76580, 76581, 76583, 76584, 765ATT1,
765ATT2, 765ATT3, 765ATT4, 765ATT5, 765ATT6, 765ATT7,
765ATT8

IMPORTANT SAFETY INSTRUCTIONS

READ ALL INSTRUCTIONS BEFORE USING

When using electrical appliances, especially when children are present, basic safety precautions should always be followed, including the following:



KEEP AWAY FROM WATER

Electricity and water are a dangerous combination and can cause death by electric shock. Do not allow electrical cords to come into contact with water or other liquids.

ELECTRICAL APPLIANCES ARE ELECTRICALLY LIVE WHEN PLUGGED IN, EVEN IF TURNED OFF.

To reduce the risk of death by electric shock:

1. Always unplug the appliance immediately after using.
2. Do not use while bathing.
3. Do not place or store the appliance where it can fall or be pulled into a bath tub or sink.
4. Do not place in or drop into water or other liquid.
5. If the appliance falls into water, unplug it immediately. Do not reach into the water.

IMPORTANT SAFETY INSTRUCTIONS



WARNING

To reduce the risk of burns, electrocution, fire or injury to persons:

1. An appliance should never be left unattended when plugged in.
2. Close supervision is necessary when this appliance is used on, or near children or individuals with certain disabilities.
3. Use this appliance only for its intended use as described in this manual. Do not use attachments not recommended by the manufacturer.
4. Never operate this appliance if it has a damaged cord or plug, if it is not working properly, or if it has been dropped, damaged, or dropped into water. Return the appliance to a service center for examination and repair.
5. Keep the cord away from heated surfaces. Do not wrap the cord around the appliance.
6. Never use while sleeping.
7. Never drop or insert any object into any opening or hose.
8. Do not use outdoors or operate where aerosol (spray) products are being used or where oxygen is being administered.
9. Do not use an extension cord with this appliance.
10. This styling wand is hot when in use. Do not let eyes and bare skin touch heated surfaces.

IMPORTANT SAFETY INSTRUCTIONS



WARNING

11. Do not place the heated styling wand directly on any surface while the wand is hot or plugged in. Use the attached stand.
12. Before plugging in, read the information about world voltage contained in the **Operating Instructions** section of this manual.



Do not use the appliance near a bath tub, washbasin or other vessel filled with water. Never place the appliance in water or any other liquid.

SAVE THESE INSTRUCTIONS

MAINTENANCE INSTRUCTIONS

CONVERTIBLE COLLECTION

1. Your appliance is virtually maintenance free. It contains no user serviceable parts and no lubrication is needed.
2. Keep heated surface clean and free of dust, dirt and hairspray.
3. If cleaning becomes necessary, disconnect the appliance from the power source and let it cool. Wipe the exterior with a damp cloth.
4. If any malfunction occurs, unplug the appliance, allow it to cool and return it to a service center for repair.
5. Never wrap the cord around the appliance since this will cause the cord to wear prematurely and break. Store the cord loosely coiled. If the cord becomes twisted, untwist it prior to use.
6. Handle the cord carefully for longer life and do not put any stress on the cord where it enters the handle. Avoid jerking, twisting or straining, especially at the plug connections. This could cause the cord to fray and possibly break.
7. Do not attempt to repair the appliance yourself.

STORAGE

When not in use, your styling tool should be disconnected and stored in a safe, dry location, out of the reach of children. Do not wrap the cord around the styling tool. Allow the cord to hang or lie loose and straight at the point of entry into the styling wand.

MAINTENANCE INSTRUCTIONS

CONVERTIBLE COLLECTION

SERVICING OF DOUBLE-INSULATED APPLIANCES

In a double-insulated appliance, two systems of insulation are provided instead of grounding. No grounding means is provided on a double-insulated appliance, nor should a means for grounding be added to the appliance.

Servicing a double-insulated appliance requires extreme care and knowledge of the system, and should be done only by qualified service personnel.

Replacement parts for double-insulated appliances must be identical to the parts they replace. A double-insulated appliance is marked with the words "DOUBLE INSULATION" or "DOUBLE INSULATED". The symbol (square within a square) may also be marked on the appliance.

OPERATING INSTRUCTIONS

CONVERTIBLE COLLECTION

This appliance is intended for household use.

Use on Alternating Current (50/60 Hz).

This appliance has a polarized plug (one blade is wider than the other). As a safety feature, this plug will fit in a polarized outlet only one way. If the plug does not fit fully into the outlet, reverse the plug. If it still does not fit, contact a qualified electrician. Do not attempt to defeat this safety feature.



WARNING

- Do not let the heated curling barrel touch your skin as you may get burnt.
- With the Whirl Trio, Whirl Convertible, and Convertible Base use the heat resistant glove included with the tool as recommended during operation to protect against accidental burns in the event your hand comes in contact with the heated barrel.



CAUTION

- Make sure to remove the plug from the outlet after use.
- Do not use if the plug is loose in the outlet as there may be risk of fire, electric shock, electrical shortage and burning.

OPERATING INSTRUCTIONS

CONVERTIBLE COLLECTION

AUTO SHUT-OFF

After approximately one hour, the unit will automatically shut itself off. To reactivate the unit, press the Power & Temperature Switch.

AUTO WORLD VOLTAGE

This appliance contains a special electronic circuit that automatically converts it for worldwide usage- from 100 to 240 volts AC 50/60 hz. Just plug it into the local outlet and use it as normal; the styler will automatically adjust to the local current. You may need an adapter to allow the plug to fit into the local outlets, however.

For connection to a 240-volt supply, use an attachment plug adapter of the proper configuration for the power supply receptacle.

Note: Tool heat up time may vary based on country and voltage.

LED BEHAVIOR IF POWER IS ON WITH NO BARREL

1. LED lights 1-5 will cascade up once.
2. Then LED lights 1-4 will cascade up for 35 seconds before turning off except LED light 2 which stays on.

NOTE: The iron will not function even if the barrel is installed. To operate, unplug the iron to reset the iron.

LED BEHAVIOR IF BARREL IS PULLED OUT WHILE IN USE

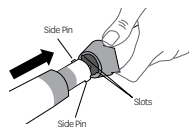
- LED lights 1-5 will cascade up once, then power off.

OPERATING INSTRUCTIONS

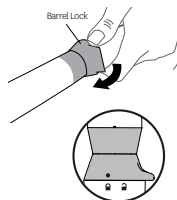
CONVERTIBLE COLLECTION

The barrels in the Whirl Trio, Twirl Trio, Whirl Convertible, and Twirl Convertible are all interchangeable. The barrels sold separately can be used with the above mentioned tools or with the Convertible Base. Each of the barrels can assist in styling a variety of looks.

- 1 Line up the ● on the Barrel Lock with the ■ on the handle. Align the 3 side pins in the barrel with the side slots in the handle and insert the barrel firmly into the handle.



- 2 Rotate the Barrel Lock until it clicks. The ● on the Barrel Lock should line up with the ■ on the handle when the barrel is securely fastened.



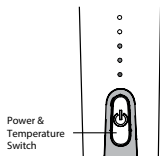
NOTE: Wait for the barrel to cool before removing it. Grasp the barrel with one hand and turn the Barrel Lock with the other hand to unlock the barrel. Then pull the barrel out of the handle.

OPERATING INSTRUCTIONS

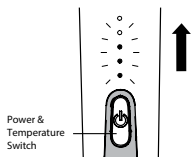
CONVERTIBLE COLLECTION

- 1 Press the Power & Temperature Switch to turn the wand on. Lights will cascade up, then turn solid when the unit is ready to use.

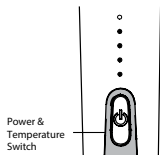
To turn the tool off, hold the Power & Temperature Switch down until all lights turn off.



- 2 To change the temperature*, double click the Power & Temperature Switch until the lights flash. Then continue to click to cycle through the temperature settings.



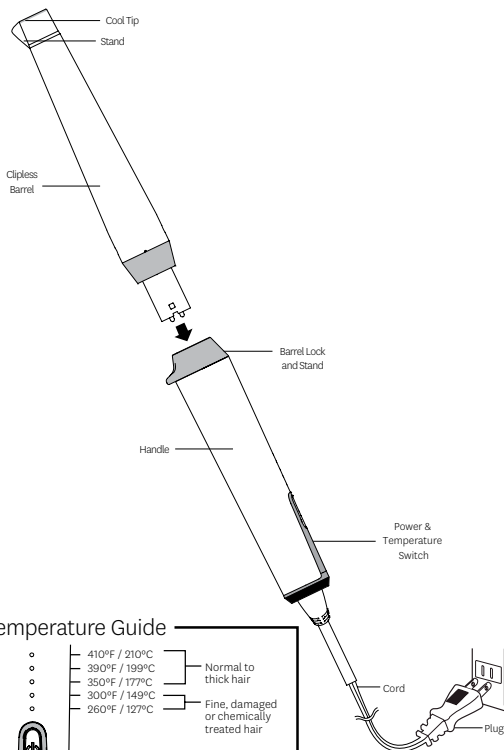
- 3 Release the Power & Temperature Switch after reaching your desired temperature. The selected temperature light(s) will flash, and all lights will cascade up or down to your selected temperature. Wait for the lights to turn solid before using the wand.



* See Temperature Guide in **Operating Instructions** for recommended settings.

OPERATING INSTRUCTIONS

CLIPLESS BARRELS



Temperature Guide

○	410°F / 210°C	Normal to thick hair
○	390°F / 199°C	
○	350°F / 177°C	
○	300°F / 149°C	Fine, damaged or chemically treated hair
○	260°F / 127°C	

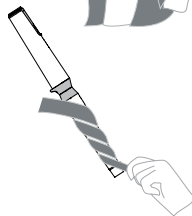
HOW TO USE YOUR

CLIPLESS BARRELS

- 1 Always begin with dry hair.
Holding the wand over your head with the tip pointing down, wrap a 1-2" section of hair around the barrel.



- 2 Finish with the end of the hair section against the tip of the wand. Hold for a few seconds and then slide the wand out to release the curl.

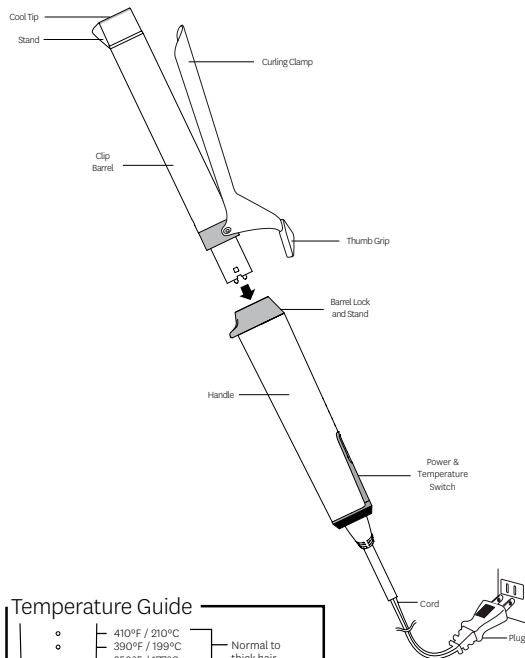


- 3 Gently tug on the curl or lightly brush out the hair for a relaxed finish.



OPERATING INSTRUCTIONS

CLIP BARRELS



Temperature Guide

•	410°F / 210°C	Normal to thick hair
•	390°F / 199°C	
•	350°F / 177°C	
•	300°F / 149°C	Fine, damaged or chemically treated hair
•	260°F / 127°C	



HOW TO USE YOUR

CLIP BARRELS

- 1 Always begin with dry hair. Insert the tip of a 1-2" section of hair into the clamp and roll the iron upwards toward the scalp.



- 2 While rolling, make sure the hair does not overlap itself around the barrel. The entire section of hair must be evenly wrapped around the barrel.



- 3 Hold the iron until the heat has fully penetrated the hair section. Then carefully open the clamp and release the curl.



- 4 Repeat this for the remaining sections of hair. For a loose wavy curl, tug slightly on the curled section before allowing it to cool.



T3 LIMITED WARRANTY TERMS & CONDITIONS

T3 Micro will repair or replace (at our option) T3 products for twenty-four (24) months from the date of purchase if they are defective in workmanship or materials. This limited warranty does not cover (1) damage due to misuse or abuse, such as incorrect voltage supply, dropping, or failure to follow enclosed instructions or (2) tampering, such as repair or attempt to repair. To obtain service under this warranty, please visit t3micro.com/warrantyclaim to submit a warranty claim, or call us at (866) 376-8880 to receive detailed instructions. You will be required to provide proof of purchase.

THIS LIMITED WARRANTY IS ONLY VALID IF THE PRODUCT IS PURCHASED FROM AN AUTHORIZED SELLER OF T3 GOODS AND IF THE ORIGINAL SERIAL NUMBER ON THE PRODUCT HAS NOT BEEN REMOVED OR OTHERWISE TAMPERED WITH.

Any implied warranties, obligations, or liabilities, including but not limited to the implied warranty of merchantability and fitness for a particular purpose, shall be limited in duration to the 24 month duration of this written limited warranty. Some states do not allow a limitation on how long an implied warranty lasts, so the above limitation may not apply to you.

IN NO EVENT SHALL T3 BE LIABLE FOR ANY SPECIAL, INCIDENTAL, OR CONSEQUENTIAL DAMAGES FOR BREACH OF THIS OR ANY OTHER WARRANTY, EXPRESS OR IMPLIED.

Visit www.T3micro.com/register to complete your warranty registration.

SUPPLIER'S DECLARATION OF CONFORMITY

47 CFR § 2.1077 COMPLIANCE INFORMATION

Model Name: **Convertible Collection**
 Model Description: **Interchangeable styling wands, barrels, & power base**
 Model Number: **76577, 76580, 76581, 76583, 76584, 765ATT1, 765ATT2, 765ATT3, 765ATT4, 765ATT5, 765ATT6, 765ATT7, 765ATT8**
 Responsible Party in USA: **T3 Micro, Inc.
228 Venice Ca 90291
866.376.8880**
 Test Report Number: **190326171GZU-001**

This equipment has been tested and found to comply with the limits for a Class B digital device, pursuant to Part 15 of the FCC Rules. These limits are designed to provide reasonable protection against harmful interference in a residential installation. This equipment generates, uses and can radiate radio frequency energy and, if not installed and used in accordance with the instructions, may cause harmful interference to radio communications. However, there is no guarantee that interference will not occur in a particular installation.

If this equipment does cause harmful interference to radio or television reception, which can be determined by turning the equipment off and on, the user is encouraged to try to correct the interference by one or more of the following measures:

- Reorient or relocate the receiving antenna.
- Increase the separation between the equipment and receiver.
- Connect the equipment into an outlet on a circuit different from that to which the receiver is connected.
- Consult the dealer or an experienced radio/TV technician for help.

FCC Compliance Statement

This device complies with Part 15 of the FCC Rules. Operation is subject to the following two conditions: (1) this device may not cause harmful interference, and (2) this device must accept any interference received, including interference that may cause undesired operation.

No change or modification to this equipment shall be made without the express written approval of the "responsible party" as defined in the FCC's rules.



**THIS PAGE INTENTIONALLY
LEFT BLANK**

**THIS PAGE INTENTIONALLY
LEFT BLANK**

**THIS PAGE INTENTIONALLY
LEFT BLANK**

MODEL NO.

76577, 76580, 76581, 76583, 76584, 765ATT1,
765ATT2, 765ATT3, 765ATT4, 765ATT5,
765ATT6, 765ATT7, 765ATT8

SPECIFICATIONS

Operating Voltage: 100-240V, 50/60Hz

Power Consumption: 96W (max)

T3 Micro, Inc.

Venice, CA USA

Made in China



WARNING

Do not use the appliance near a shower, bathtub, washbasin or other vessel filled with water. Never place the appliance in water or any other liquid.

